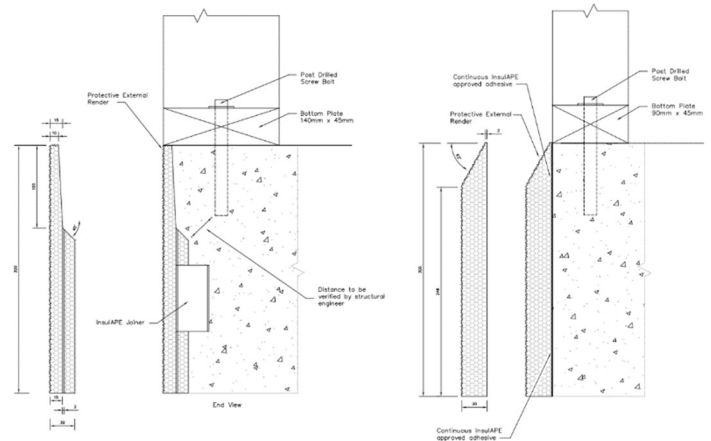




InsulAPE



For Slab Edge Insulation Pre & Post Fix

InsulAPE™ is an engineered pre-finished slab edge insulation system with proven designs able to be installed both cast-in before (“pre”) the foundation concrete pour or externally applied after (“post”) the slab is poured. InsulAPE is supplied with a toughened prefinished texture with a concrete-like finish. The base insulation is Expol-X XPS foam with an R-value of R1.1 (at 30mm thick).

Higher R-values, thicknesses and a range of top edge details are available.

Standard Sizes:

30mm thick, 300mm high, and 600mm high

Custom Design Options:

30/40/50mm thick, variable heights

Pre-Manufactured Corners:

Ensuring a structurally sound external corner, and delivering continuous insulation across the perimeter of the slab. The pre-manufactured corners offer substantial improvements reducing thermal bridging at weak points and with a heightened aesthetic finish. Pre-Manufactured corners are 210 x 210mm in the same thickness and top edge detail as the order.

Manufacture

InsulAPE is pre-manufactured using our proprietary special resin/plaster system. The insulation material is initially wrapped in reinforcing mesh and then waterproofed using our proprietary resin mix. A textured coat is then applied as a finishing layer.

Oct 2023

- Excellent thermal performance
- Sealed units, high resistant to water absorption
- Lightweight and easy to handle
- Tough and durable, not easily damaged
- Dimensionally stable
- Can be painted any colour
- Proven performance since 2014
- Range of standard designs

See our technical drawings and installation instructions on our website

027 525 4024

www.insulape.co.nz



Technical Data

Refer to the Product Technical Statements

Installation

See the relevant installation instructions depending on application type:

- InsulAPE Installation Instructions Post V1
- InsulAPE Installation Instructions Pre V1

Profiles & Applications

The below table details our range of standard top edge profiles and which applications they can be used in.

| InsulAPE Top-Edge Profiles <i>(see technical drawings for more information)</i> | |
|---|--|
| Cast-in Pre-Install | Externally applied Post-Install |
| Square top | Square top |
| Taper top | Bevel top |
| | Wide-Bevel top |
| | Tongue top |
| <i>(custom profiles and thicknesses R-Value available on request)</i> | |

Components

Depending on the application, InsulAPE is supplied with different components as outlined below:

- InsulAPE 2.5m lengths - available in either 300mm or 600mm heights
- InsulAPE pre-formed 210mm x 210mm external corners
- Proprietary resin mix for sealing on-site cuts
- Final Coat/Touch-up Kit
- H-Joiners for keying into concrete and joining each length/corner together (Pre-install ONLY)
- PT-300 concrete adhesive (Post-install ONLY)

Thermal Performance

The below table details some typical R-values for the Expol-X XPS core insulation material which InsulAPE uses.



| InsulAPE with Expol-X XPS | | | | |
|---------------------------|-----------------------------|-----------------|-------------|-------------|
| Thickness (mm) | Thermal Conductivity (W/mK) | R-Value (m2K/W) | Length (mm) | Height (mm) |
| Standard 30 | 0.028 | 1.1 | 2500 | 300 & 600 |
| 40 | 0.028 | 1.45 | 2500 | 300 & 600 |
| 50 | 0.028 | 1.8 | 2500 | 300 & 600 |

(R-Value of custom profiles may need to be verified, R-Values as per Expol datasheets)

Standard Drawing List

All drawings are indicative only. Measurements and angles shown are subject to manufacturing tolerances.

| Part# | Pre/Post | Top Detail | Insulation | R-Value | Thickness (mm) | Height (mm) |
|------------------|----------|------------|------------|---------|----------------|-------------|
| APE-30-300-EX-BV | POST | Bevel | EXPOL-X | 1.1 | 30 | 300 |
| APE-30-600-EX-BV | POST | Bevel | EXPOL-X | 1.1 | 30 | 600 |
| APE-30-300-EX-TG | POST | Tongue | EXPOL-X | 1.1 | 30 | 300 |
| APE-30-600-EX-TG | POST | Tongue | EXPOL-X | 1.1 | 30 | 600 |
| APE-30-300-EX-SQ | POST | Square | EXPOL-X | 1.1 | 30 | 300 |
| APE-30-600-EX-SQ | POST | Square | EXPOL-X | 1.1 | 30 | 600 |
| APE-30-300-EX-WB | POST | Wide-Bevel | EXPOL-X | 1.1 | 30 | 300 |
| APE-30-600-EX-WB | POST | Wide-Bevel | EXPOL-X | 1.1 | 30 | 600 |
| APE-30-300-CI-TP | PRE | Taper | EXPOL-X | 1.1 | 30 | 300 |
| APE-30-600-CI-TP | PRE | Taper | EXPOL-X | 1.1 | 30 | 600 |
| APE-30-300-CI-SQ | PRE | Square | EXPOL-X | 1.1 | 30 | 300 |
| APE-30-600-CI-SQ | PRE | Square | EXPOL-X | 1.1 | 30 | 600 |